

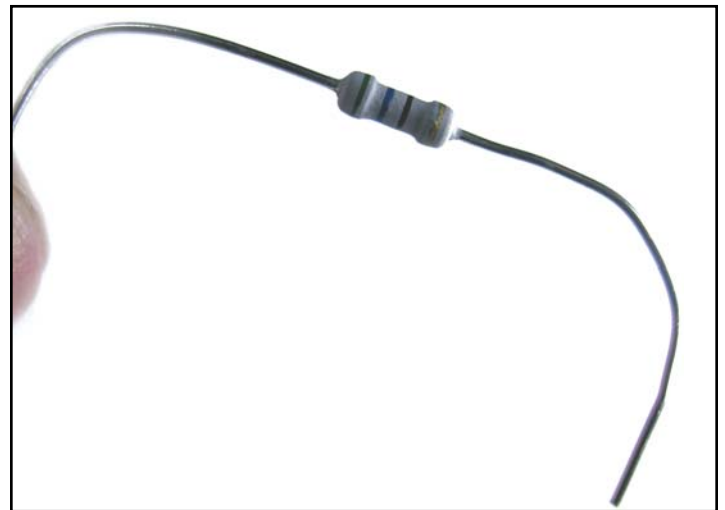
SAMSUNG CLP 500 - CARTRIDGE REMANUFACTURING INSTRUCTIONS INCLUDING CARTRIDGE RESET SYSTEM FUSE INSTRUCTIONS



**SAMSUNG CLP 500
COLOR LASER PRINTER**



**TONER CARTRIDGE
PAGE 2**

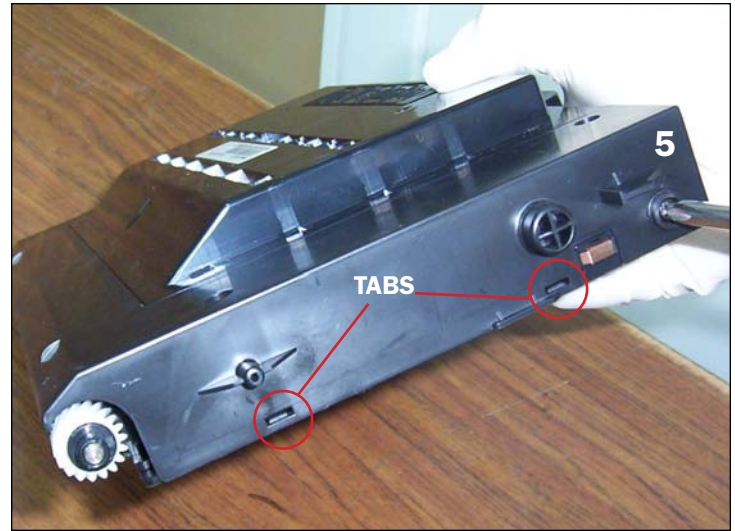


**CARTRIDGE RESET SYSTEM INSTRUCTIONS
PAGE 4**





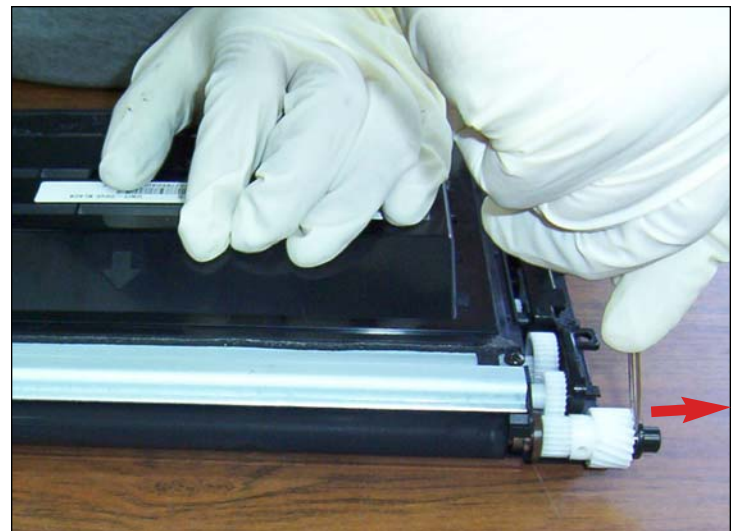
1. Remove the outer shell by first removing FIVE screws: FOUR screws are located on the top of the cartridge as shown.



2. The FIFTH screw is located on the gear-side of the cartridge. After removing the screws, unlock the bottom side of the shell by pushing in the TABS shown using a flat-head screw driver.



3. Remove the cover as shown. You will notice a small adhesive holding it in place, but it will not be affected if the cover is removed.



REMOVING THE DEVELOPER ROLLER
4. Using a small flat-head screwdriver, remove the locking metal CLIP located at each end of the developer roller axle. This clip holds the axle gear in place. Push the clip out away from the axle as shown.

NOTES:



USA
Ph: +310-280-9620
Fx: +310-838-7294

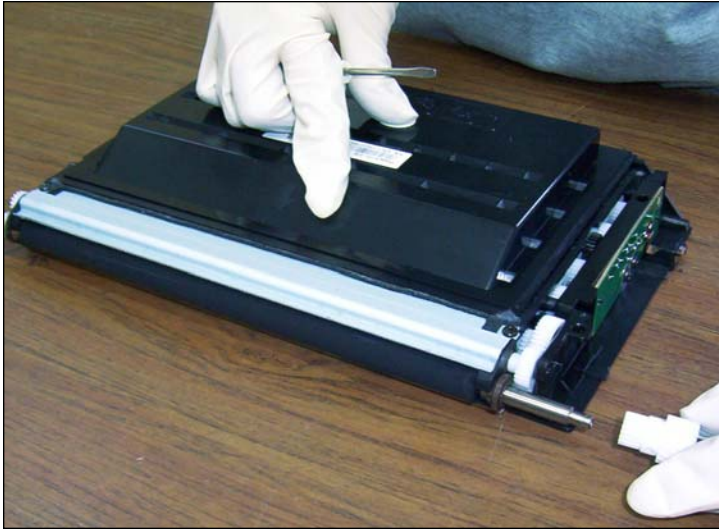
EUROPE
+34-93-757-1335
+34-93-741-4166

JAPAN
+81-3-44-55-2789
+310-838-7294

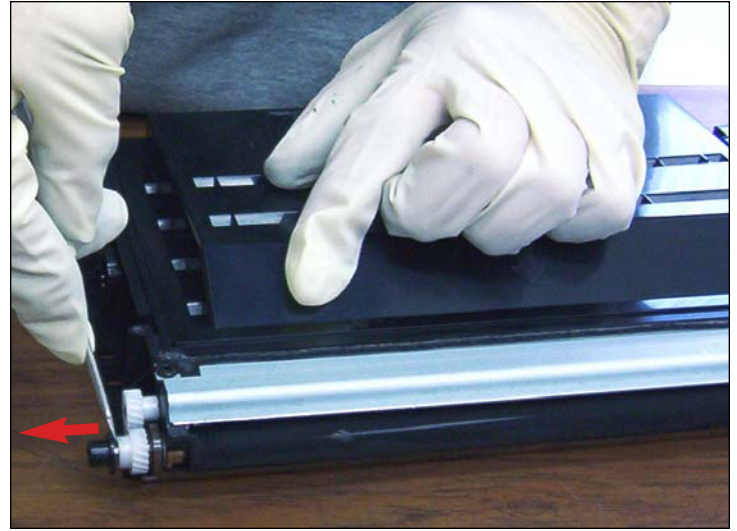
BRAZIL
+55-11-4822-3033
+55-11-4822-3353

ARGENTINA
+54-11-4571-2388
+54-11-4574-3706

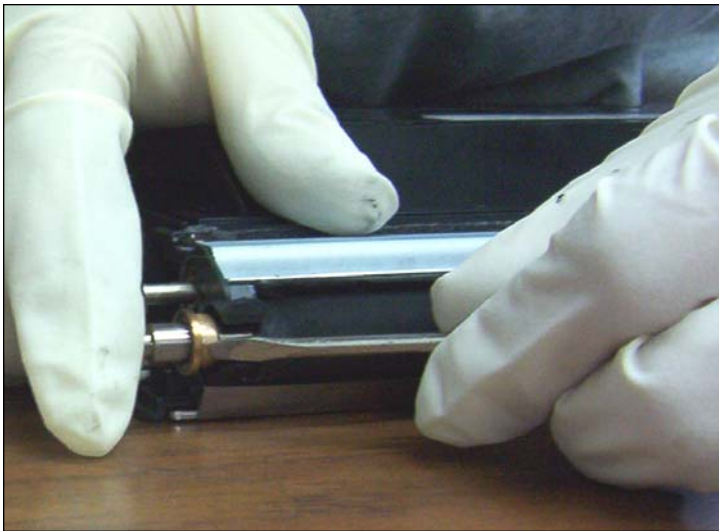
11124 Washington Blvd., Culver City, California U.S.A. 90232 Ph: 310 280-9620 • Fx: 310 838-7294 • techsupport@uninetimaging.com



5. Slide the developer roller gear off as shown.



6. Remove the locking metal clip and gear from the opposite end of the axle in the same manner as in Step 4 and 5.



7. Using a small flat-head screwdriver, push out the metal washer-like ring that holds the axle in place near the toner fill plug area. The other side should remain in place.



8. Slip the developer roller outward then slide it away toward the side of the cartridge.

NOTES:



USA
Ph: +310-280-9620
Fx: +310-838-7294

EUROPE
+34-93-757-1335
+34-93-741-4166

JAPAN
+81-3-44-55-2789
+310-838-7294

BRAZIL
+55-11-4822-3033
+55-11-4822-3353

ARGENTINA
+54-11-4571-2388
+54-11-4574-3706

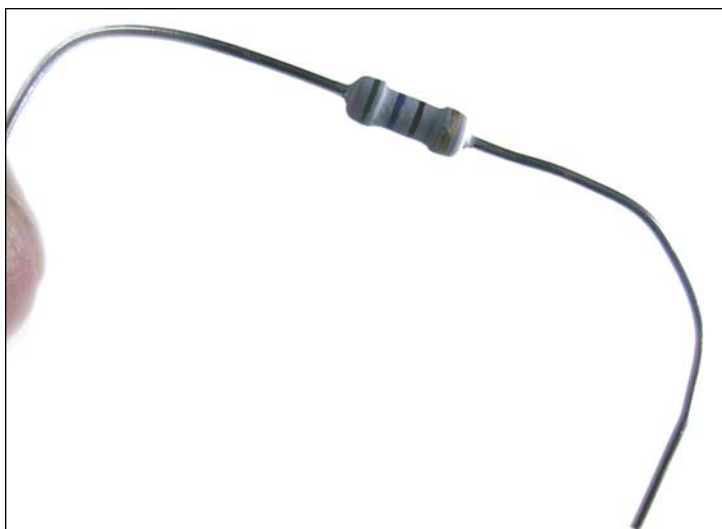
11124 Washington Blvd., Culver City, California U.S.A. 90232 Ph: 310 280-9620 • Fx: 310 838-7294 • techsupport@uninetimaging.com



9. Remove the toner fill plug to begin the cleaning process. Use a vacuum on easy areas making sure there is nothing that will vent. Use air pressure for hard-to-reach and sensitive areas.



10. After thoroughly cleaning the cartridge and installing clean components, you are now ready to install your after-market toner.



REPLACING THE CARTRIDGE RESET SYSTEM FUSE

Samsung CLP 500, 550 Smartchip BK/C/M/Y Fuse
(Uninet part #8172)

NOTE: Electrical soldering is required for this section.



11. Locate the CONTACT ASSEMBLY on the gearless side of the cartridge. Using a small flat-head screwdriver, carefully pry loose the cartridge contacts assembly as shown.

NOTES:



USA
Ph: +310-280-9620
Fx: +310-838-7294

EUROPE
+34-93-757-1335
+34-93-741-4166

JAPAN
+81-3-44-55-2789
+310-838-7294

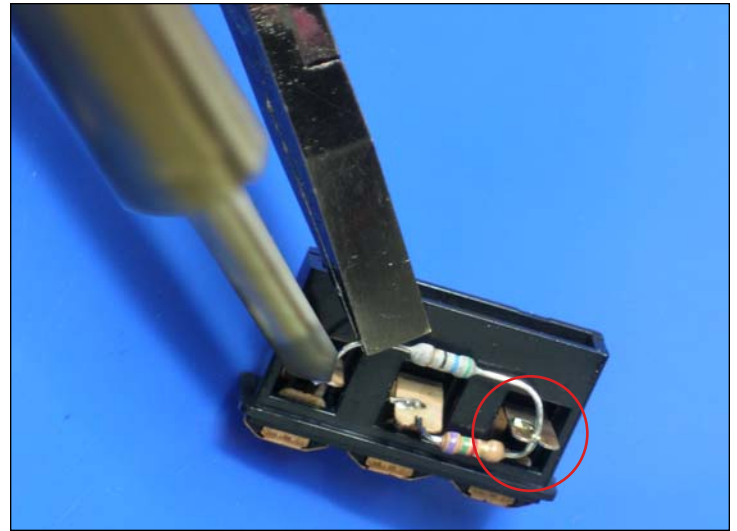
BRAZIL
+55-11-4822-3033
+55-11-4822-3353

ARGENTINA
+54-11-4571-2388
+54-11-4574-3706

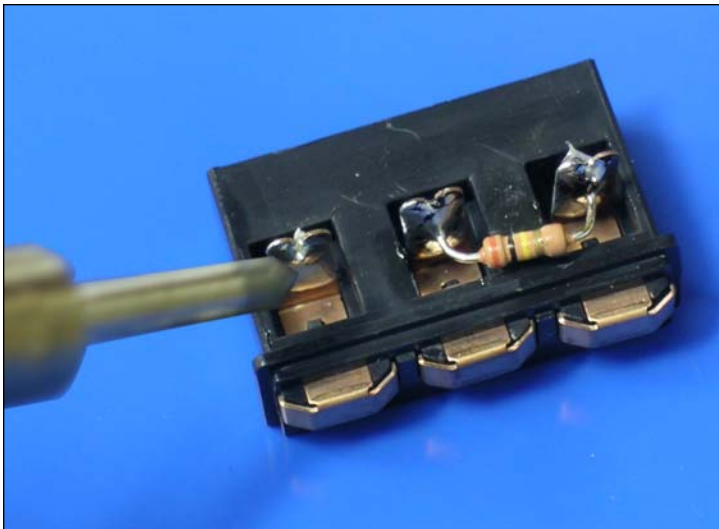
11124 Washington Blvd., Culver City, California U.S.A. 90232 Ph: 310 280-9620 • Fx: 310 838-7294 • techsupport@uninetimaging.com



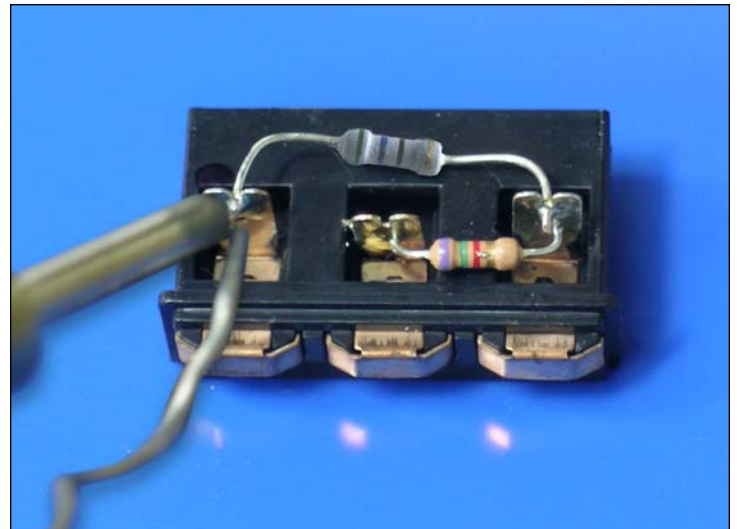
12. Locate the FUSE that is soldered to the two outer contact tabs.



13. Use pliers to hold the FUSE while applying the heated solder iron to the tab connected to it as shown. Carefully remove the wire as the solder melts. Repeat the same on the other tab. **DO NOT OVERHEAT** the tab as this may cause the housing to melt.



14. Use the solder iron to smooth out any solder material remaining on the outer contact tabs.



15. Solder the CARTRIDGE RESET SYSTEM FUSE onto the outer contact tabs as shown. You can solder any side to either contact as the tabs are not specific. Be careful not to overheat the tabs.

NOTES:



USA
Ph: +310-280-9620
Fx: +310-838-7294

EUROPE
+34-93-757-1335
+34-93-741-4166

JAPAN
+81-3-44-55-2789
+310-838-7294

BRAZIL
+55-11-4822-3033
+55-11-4822-3353

ARGENTINA
+54-11-4571-2388
+54-11-4574-3706

11124 Washington Blvd., Culver City, California U.S.A. 90232 Ph: 310 280-9620 • Fx: 310 838-7294 • techsupport@uninetimaging.com



16. Insert the completed assembly back into the cartridge by lining up the tabs with the holes shown.



17. With the tabs in place, the assembly is now locked.



NOTES:

TESTING THE CARTRIDGE

18. Make sure the printer is turned OFF before installing and testing the cartridge.



USA
Ph: +310-280-9620
Fx: +310-838-7294

EUROPE
+34-93-757-1335
+34-93-741-4166

JAPAN
+81-3-44-55-2789
+310-838-7294

BRAZIL
+55-11-4822-3033
+55-11-4822-3353

ARGENTINA
+54-11-4571-2388
+54-11-4574-3706