

SAMSUNG CLP 600 CARTRIDGE REMANUFACTURING INSTRUCTIONS

SAMSUNG CLP 600

COLOR LASER PRINTER



TOOLS NEEDED

- Metric screw (metal pin removal)
- Phillips Screwdriver
- Flat-head Screwdriver (small and standard)
- Pliers
- Hook Tool (angled and straight)

SUPPLIES NEEDED

- Black toner 150g
- Cyan toner 150g
- Magenta toner 150g
- Yellow toner 150g
- Black Smartchip
- Cyan Smartchip
- Magenta Smartchip
- Yellow Smartchip

OPTIONAL SUPPLIES

- Doctor blade
- Wiper blade



FRONT VIEW



CONTACT-SIDE VIEW



GEAR-SIDE VIEW





SEPARATING THE CARTRIDGE SECTIONS

1. Remove the tension spring that is attached to the contact end plate and drum axle.



REMOVING THE PINS

2. Insert a small metric screw into the cartridge pin. Turn clockwise until the screw has a tight hold on the pin, then pull the pin out.



3. Pin removed.



4. Use the same procedure for the opposite pin.



USA
Ph: +1 310-280-9620
Fx: +1 310-838-7294



EUROPE
+34-93-757-1335
+34-93-741-4166



JAPAN
+81-3-44-55-2789
+1 310-838-7294



CHINA
+8610 6297 6428
+8610 6297 9584



BRAZIL
+55-11-4822-3033
+55-11-4822-3353



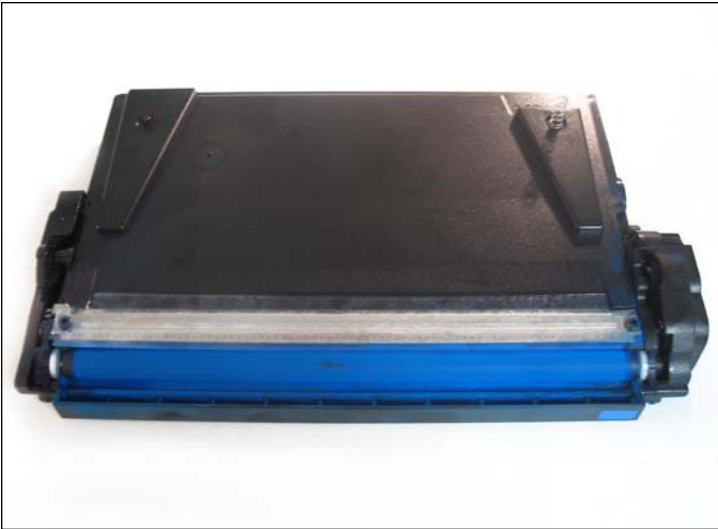
ARGENTINA
+54-11-4571-2388
+54-11-4574-3706



5. Pin removed.

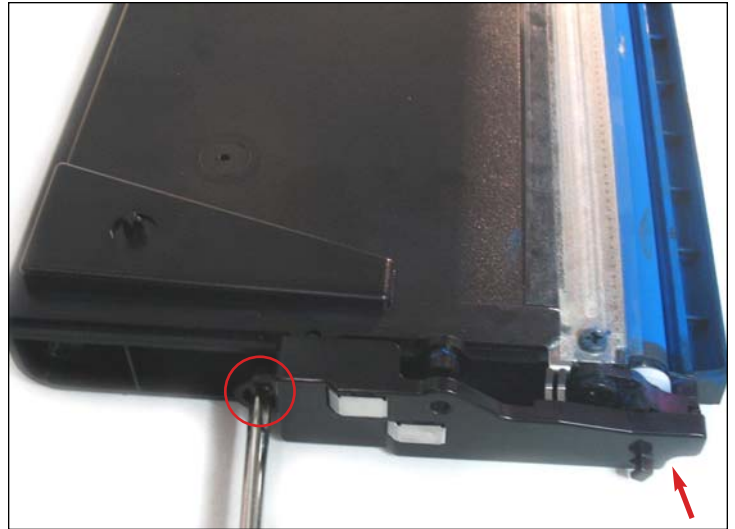


6. Separate the two halves as shown.



DISASSEMBLING THE TONER CARTRIDGE

7. Toner cartridge front view



REMOVING THE CONTACT END PLATE

8. First, remove the end plate by removing the two screws (shown) that hold it in place.



USA
Ph: +1 310-280-9620
Fx: +1 310-838-7294



EUROPE
+34-93-757-1335
+34-93-741-4166



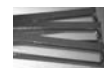
JAPAN
+81-3-44-55-2789
+1 310-838-7294



CHINA
+8610 6297 6428
+8610 6297 9584



BRAZIL
+55-11-4822-3033
+55-11-4822-3353



ARGENTINA
+54-11-4571-2388
+54-11-4574-3706

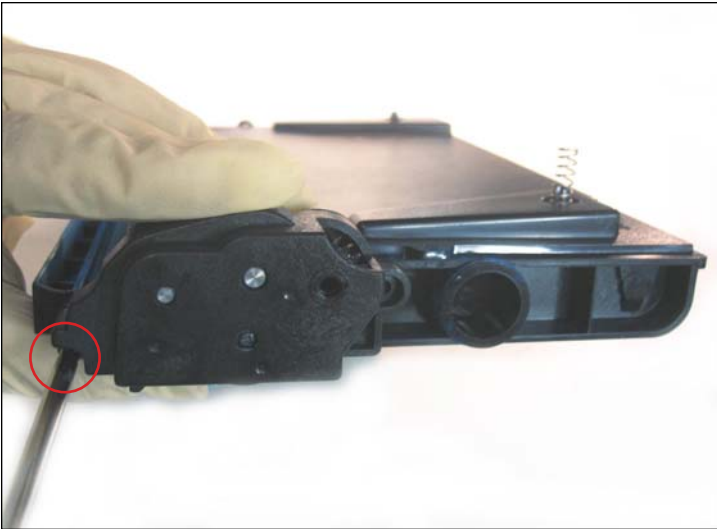


9. End plate removed.



REMOVING THE GEAR-SIDE END PLATE

10. Remove the two screws that hold the end plate in place. This will allow access to the gears inside. Remove the first screw from the area shown.



11. Remove the second screw from the area shown.

NOTES



USA
Ph: +1 310-280-9620
Fx: +1 310-838-7294



EUROPE
+34-93-757-1335
+34-93-741-4166



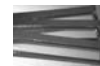
JAPAN
+81-3-44-55-2789
+1 310-838-7294



CHINA
+8610 6297 6428
+8610 6297 9584



BRAZIL
+55-11-4822-3033
+55-11-4822-3353



ARGENTINA
+54-11-4571-2388
+54-11-4574-3706



REMOVING THE GEARS

12. Remove the gears.

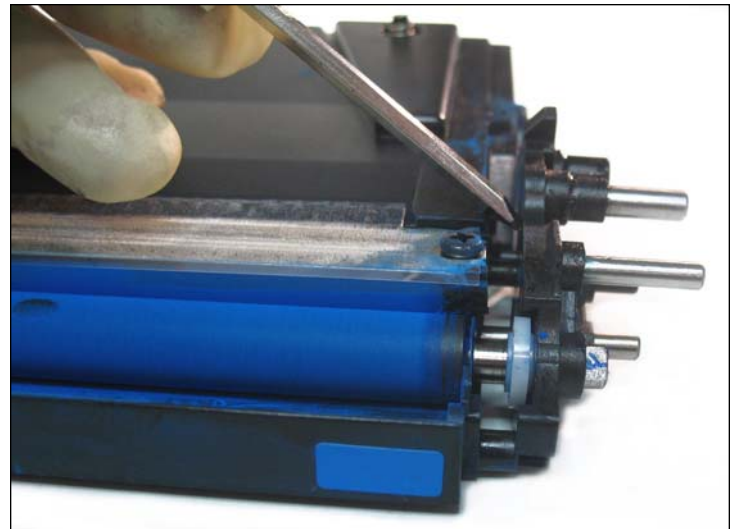


13. Gears removed.



GEAR-SIDE SUPPORT PLATE REMOVAL

14. Locate the gear-side support plate (shown) and remove the screws that hold it in place.

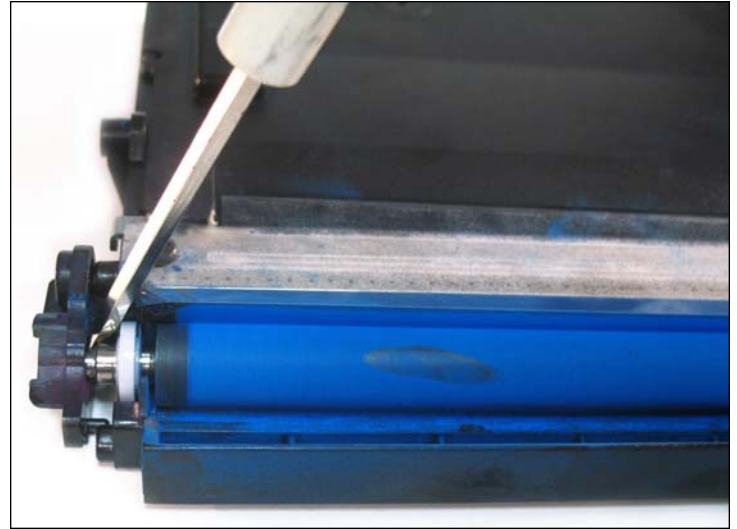


15. Using a flat head screwdriver, pry the loosened plate away from the cartridge to remove it completely.



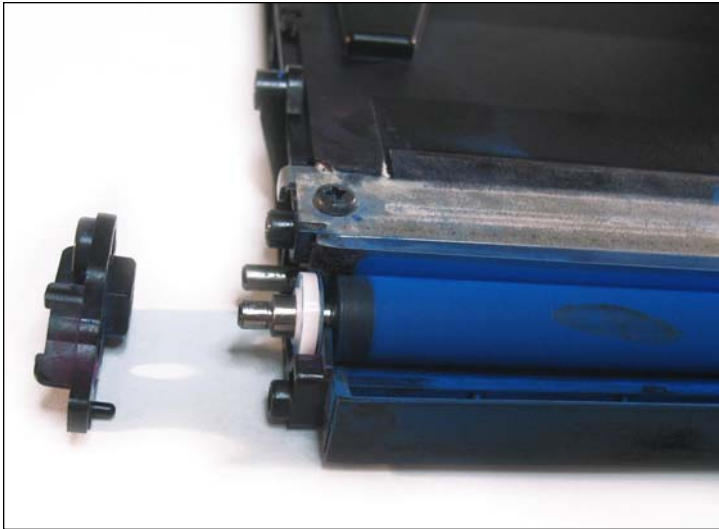


16. Gear-side support plate (shown) removed.



CONTACT-SIDE SUPPORT PLATE REMOVAL

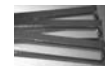
17. Remove the contact-side support plate in the same manner as in the previous steps (14-16).



18. Contact-side support plate (shown) removed. You are now ready to remove the developer roller.



19. Remove the developer roller as shown.





20. Locate the fill plug on the gear-side of the cartridge. Using a pair of pliers, carefully pull it out.

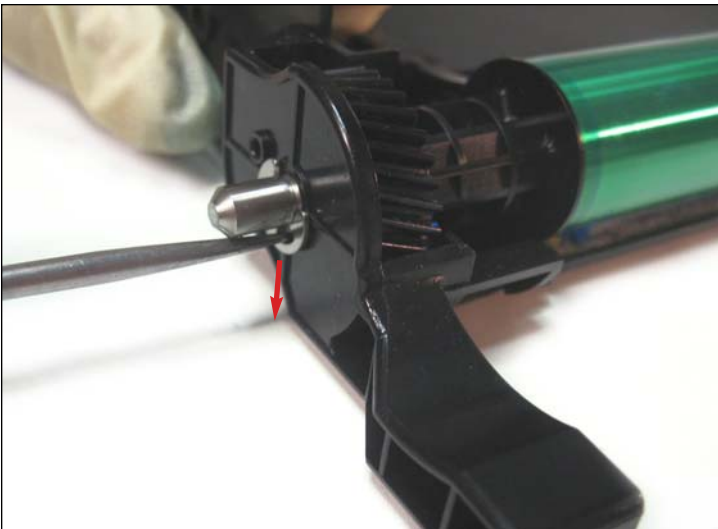
Clean cartridge and components thoroughly using compressed air and refill with new toner.

Reassemble the hopper and set aside.



DISASSEMBLING THE DRUM UNIT

21. Drum unit shown.



UNLOCKING THE OPC DRUM

22. Locate the "C"clip (shown) that holds the OPC drum in place on both side. Use a small flat head screwdriver or straight hook tool to draw both "C" clip out.



23. "C" clip (shown) removed.



USA
Ph: +1 310-280-9620
Fx: +1 310-838-7294



EUROPE
+34-93-757-1335
+34-93-741-4166



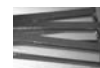
JAPAN
+81-3-44-55-2789
+1 310-838-7294



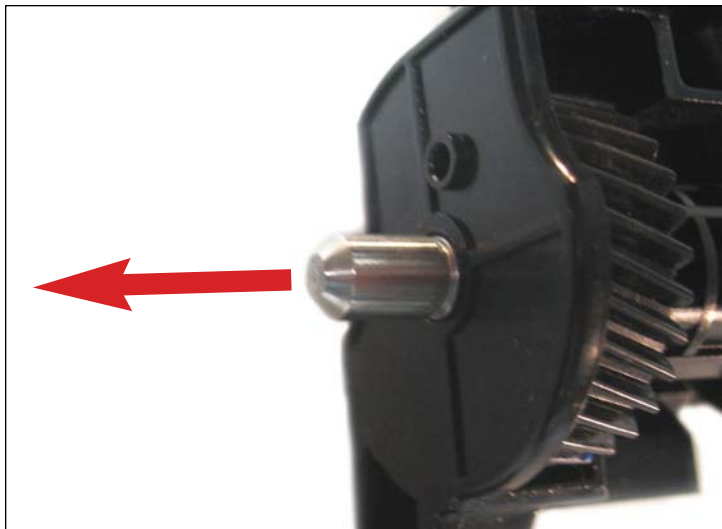
CHINA
+8610 6297 6428
+8610 6297 9584



BRAZIL
+55-11-4822-3033
+55-11-4822-3353



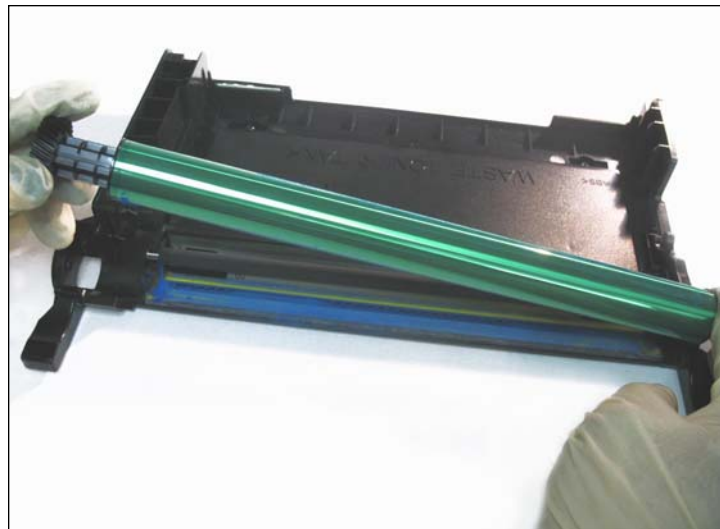
ARGENTINA
+54-11-4571-2388
+54-11-4574-3706



REMOVING THE DRUM AXLE

24. Pull out the drum axle through the gear-side as shown. Follow through until the axle is completely removed.

NOTE: Pulling out the axle through the opposite (gearless) side would force a gap between the OPC contact and the axle. The end result would be blank pages due to loss of OPC conductivity.



REMOVING THE OPC DRUM

26. Remove the OPC drum as shown.



REMOVING THE PCR

27. Remove as shown.

NOTES



USA
Ph: +1 310-280-9620
Fx: +1 310-838-7294



EUROPE
+34-93-757-1335
+34-93-741-4166



JAPAN
+81-3-44-55-2789
+1 310-838-7294



CHINA
+8610 6297 6428
+8610 6297 9584

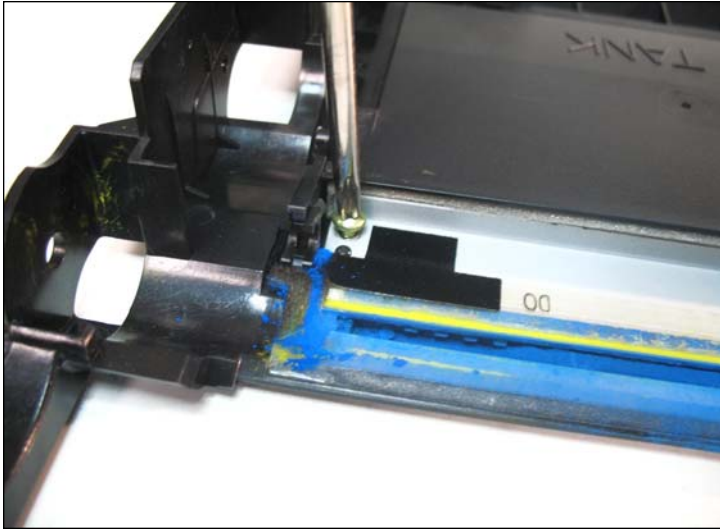


BRAZIL
+55-11-4822-3033
+55-11-4822-3353



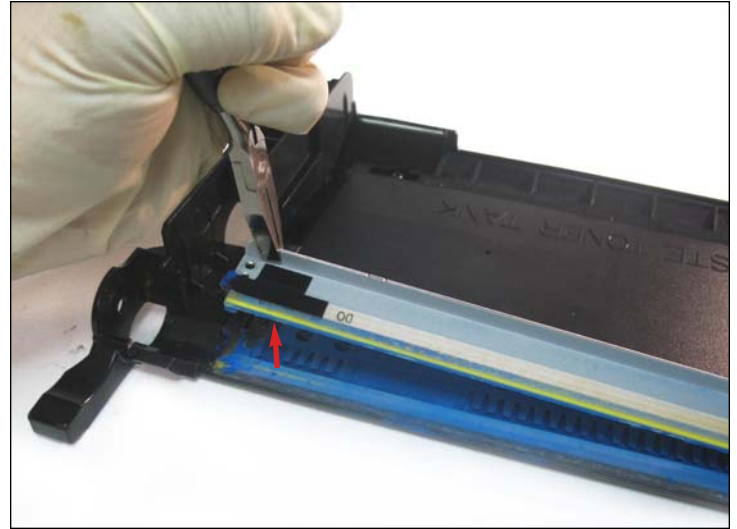
ARGENTINA
+54-11-4571-2388
+54-11-4574-3706



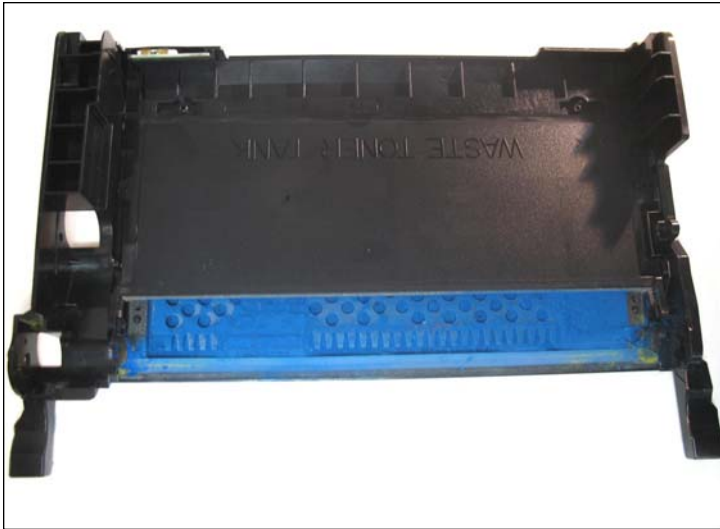


REMOVING THE WIPER BLADE

28. First, remove the two screws from both ends of the wiper blade.



29. Using a pair of pliers, grip and remove the wiper blade as shown.



30. Clean thoroughly and reassemble the drum unit.

NOTES



USA
Ph: +1 310-280-9620
Fx: +1 310-838-7294



EUROPE
+34-93-757-1335
+34-93-741-4166



JAPAN
+81-3-44-55-2789
+1 310-838-7294



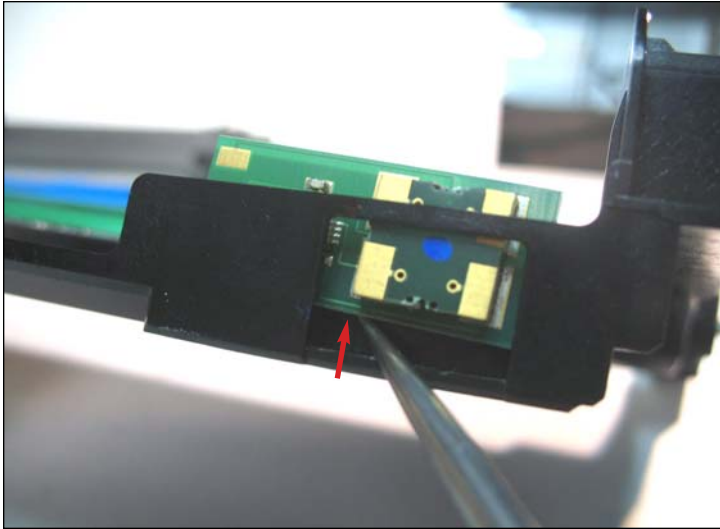
CHINA
+8610 6297 6428
+8610 6297 9584



BRAZIL
+55-11-4822-3033
+55-11-4822-3353



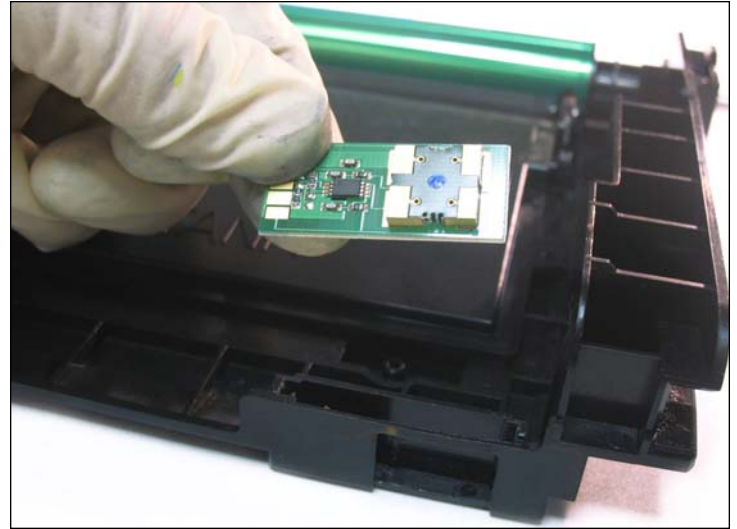
ARGENTINA
+54-11-4571-2388
+54-11-4574-3706



OEM CHIP REPLACEMENT

32. Just prior to joining the drum unit and toner hopper, you must replace the OEM chip located at the rear of the drum unit.

Using a small flat head screwdriver, pry the chip upward as shown.



33. Remove the OEM chip and replace it with a new after-market one.

Join the cartridge halves and test the cartridge.

NOTES



USA
Ph: +1 310-280-9620
Fx: +1 310-838-7294

EUROPE
+34-93-757-1335
+34-93-741-4166

JAPAN
+81-3-44-55-2789
+1 310-838-7294

CHINA
+8610 6297 6428
+8610 6297 9584

BRAZIL
+55-11-4822-3033
+55-11-4822-3353

ARGENTINA
+54-11-4571-2388
+54-11-4574-3706

11124 Washington Blvd., Culver City, California U.S.A. 90232 • techsupport2@uninetimaging.com

All Trademark names are property of their respective owners. Product brand names mentioned are intended to show compatibility only. Uninet Imaging does not guarantee or warrant downloaded information.
© 2006 Uninet Imaging Inc.